

INFORMAL CONCERT
at Whittall (Whitehall) Barn
MONDAY FEB 13th at 4.00pm
Violin Students age 10 - 15 with exams!
Elisabeth Waterhouse invites you

Please note the photo scanning dates for the local Archive Project. Dig out those interesting artefacts. We've not had a village historian of late but the "Combe Sisters" record of Brockhampton 1900 to 1950 is a great addition. Maybe between us we can do 1950 onwards.

Seems to have been a great response to the Broadband Survey though it does reveal very slow local speeds generally.

The WI continues to hold interesting talks. Next is by our own Liz Suckling on local landmark "Crickley Hill".

Following December's play, BADS is planning a new production. Interested? Next meeting is Feb 23rd 7.30. JOIN!

The closing date for items to be included in the next (April-May) edition is:-

15th March 2012

Bill & Anne Jenkin: 820338
email: removed (spam prevention)

Broadband Survey

Tex Cook, our local 'Broadband Champion' reports that in the recent survey he had 110 paper forms returned and that at least another 20 informed him that they had done it on line. "I think that is really good. Also, some will have done it and not told me."

Speeds vary considerably but over 75% of those that reported a speed were less than 1Mbps and about half were around the 0.5Mbps- 0.75 Mbps which is very poor. BT report that 80% of the UK will manage 20Mbps by this March, if this is true then we are way behind. It is now up to GFirst (www.gfirst.co.uk) in Gloucester to collate the facts and use them accordingly. Tex has written to our local MP to tell him the details and will be contacting Chris Cowcher of Gloucestershire Rural Community Council to get advice on where we go from here..

You can contact Tex on 821018



Gardens should now be carefully attended.

VILLAGE ARCHIVE PROJECT

Do you have old photographs, newspaper cuttings or any other document or object relating to our villages? If so please help us keep our past alive.

Bring anything which gives a little insight into what things were like in earlier years to the village hall on one of the dates below. They can be photographed or copied and eventually a scrapbook will be compiled and kept in the hall. It could also be placed on the village website.

Old photos (including slides or negatives), aerial shots of your house, maybe an old show programme or newspaper clipping, please bring them along. **Let's not lose our past.**

18th February and 17th March - 10am to 2pm

If you can't make it on one of those dates but have something of interest contact Georgina on 820423



Parish Meeting

The Annual Parish Meeting will be held at 7.00pm on Wednesday 28th March 2012 in Rhodes Memorial Hall, Brockhampton.

It will be followed by a meeting of Sevenhampton Parish Council

Grass Cutting 2012

Tenders are invited for grass cutting services within Sevenhampton Parish for a period of 12 months with effect from 5th April 2012

The full tender document may be obtained from the Parish Clerk at the address below,

TENDERS TO BE RECEIVED BY THE PARISH CLERK BY 15 MARCH 2012
The Old Shop, Brockhampton, GL54 5XG

Brockhampton 1900 - 1950

If you are new to the village, or not so new but wish to find out more about what went on here in the comparatively recent past, you must get hold of a copy of 'Brockhampton 1900 - 1950', a booklet compiled from the memories recounted by sisters Val Smith and Gill Lanfear (née Combe) in their walk round the village last year. It is a fascinating glimpse of some of the characters and a way of life which existed here 50 years and more ago.

You can get them from Georgina Oldham for £2 (820423).

YOUNG QUILTERS

We meet once a month in the hall from 10am to 12.30pm having fun and learning to sew by hand and with machines. Any girls or boys aged between 5 and 18 are welcome to join.

Next meeting 4th February

Phone Georgina 820423

Bus Service

Problems and New Timetable

There have been reports of people having to wait a long time in Andoversford for their connecting bus and difficulties in getting on the bus which takes them on to Cheltenham and having to stand. If you experience a problem, please make a note of the date, time and bus and let the Parish Council know about it* so that we can make representations to Glos CC. We hope to be able to have suitable forms available for this in the near future.

*Parish Clerk 01242 820718
email removed (spam prevention)

Changes to Bus Times

There are some changes to the bus times from Monday 30th Jan 2012 as follows: The Early bus from Temple Guiting to Andoversford will run ten minutes earlier than at present and the connecting bus from Andoversford will run 15 minutes earlier i.e.

Service 804 (Mon to Fri)

Brockhampton 07:30
Sevenhampton 07:34
arr Andoversford 07:52

Service 801 (Mon to Fri)

dep Andoversford 07:57
arr Cheltenham 08:17

N.B The later 'shoppers bus' which runs on Tuesdays and Saturdays is not affected.



Hadfield Fine Art Spring Exhibition

18 February - 4 March 2012

South Paddock, Sevenhampton, GL54 5SW

Original Contemporary British Art

Group Exhibition with a room dedicated to local scenes of the Cotswolds

Thursdays - Sundays 10.00am - 5.00pm

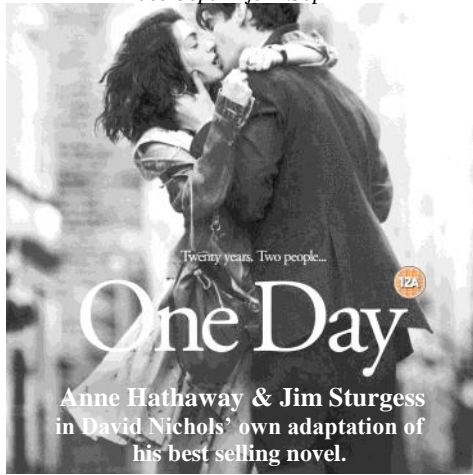
Other times by appointment

Art Lunch - Tuesday 28 February 1-3pm

See website for further details or tel: 821251

www.hadfieldfineart.co.uk

Thursday 9th February
Rhodes Memorial Hall, Brockhampton
doors open 7 for 7.30pm



tickets £3.00 on the door
further information 01242 820338
www.sevenhampton.org/films

Village Diary

including ☩ Church Services

Every Thursday

10.30 - 11.30am in the Reading Rom - Coffee Club with the Village Agent.

February 2012

Thu 2 nd	7.30pm	CA - Quiz Night
Sun 5 th	6.30pm	☩S'h - Evensong
Mon 6 th	7.30pm	RMH - WI
Thu 9 th	7.30pm	RMH - Film - 'One Day'
Sun 12 th	11.00am	☩Ch'A - Matins
	6.00pm	☩Hm - Holy Communion
Mon 13 th	4.00pm	Whittall Barn - Concert
Tue 14 th	3.00pm	RMH - Century Club
Fri 17 th	7.30pm	RMH - Garden Club
Sat 18 th	10.00am	RMH - Village Archives
		South Paddock - Art Exhibn. opens*
Sun 19 th	10.00am	☩S'h - Family Service
Thu 23 rd	7.30pm	RMH - BADS meeting
Sun 26 th	11.00am	☩S'h - Holy Communion
	6.00pm	☩Hm - Holy Communion

March 2012

Thu 1 st	7.30pm	CA - Quiz Night
Sat 3 rd	2.15pm	RMH - Jumble Sale
Sun 4 th	6.30pm	☩S'h - Evensong
		South Paddock - Art Exhibn. closes*
Mon 5 th	7.30pm	RMH - WI
Thu 8 th	7.30pm	RMH - Film Show
Sun 11 th	11.00am	☩Ch'A - Matins
	6.00pm	☩Hm - Evening Service
Tue 13 th	3.00pm	RMH - Century Club
Fri 16 th	7.30pm	RMH - Songs from Musicals
Sat 17 th	10.00am	RMH - Village Archives
Sun 18 th	10.00am	☩S'h - M.Sunday Service
Mthrgng S.	11.00am	☩H - M.Sunday Service
Fri 23 rd	7.30pm	RMH - Garden Club
Sun 25 th	6.30pm	☩S'h - Evensong (TBC)
Wed 28 th	7.00pm	RMH - Parish Meeting

*Fine Art Exhibition runs 18th Feb to 4th March.

Key: RMH = Rhodes Memorial Hall

RR = Reading Room, Rhodes Memorial Hall

CA = 'Craven Arms'

☩Ch'A. = St Martin's Church, Charlton Abbotts

☩S'h. = St Andrew's Church, Sevenhampton

☩H = St. Edward's Church, Hawling

☩Hm = Hawling Chapel

April & May dates for your Diary:

22nd April - Tea Party with String Quartet.

28th April - Diamond Jubilee bunting making[§].

5th May - Coffee Morning in aid of the British Heart Foundation.

[§]10 to 4, come for the day or just for an hour or two. Plenty to do. Bring any fabrics (cotton preferable) in red, white or blue. Sewing machines on hand or hand stitch. If you have fabrics but can't come let Georgina know (820423).

SEVENHAMPTON & DISTRICT WOMEN'S INSTITUTE

The local Women's Institute meets usually on the first Monday evening of each month in The Rhodes Memorial Hall in Brockhampton at 7.30pm



We have interesting speakers and it's a great way to get to know people, so if you are new to the village, why not come along and meet us.

In 2011 we celebrated our 75th birthday, ending the year with a special afternoon tea party in October to which we invited past members. We held a day workshop making willow garden structures, visited Cheltenham Ladies College, made a day trip to the WI's own college; Denman and some members visited The Blue Glass Factory in Bristol.

Our August meeting was held in a beautiful garden in Winchcombe. Amongst our varied monthly speakers there was a very colourful belly dancing demonstration which led to one or two members taking up classes. Throughout the year we collected items towards the Samaritan's Purse shoebox appeal and as a result we were able to fill 43 boxes.

A team was entered in the county quiz and finished in third place. Our skittle team weren't quite so successful this year. We've organised jumble sales, made pennants for the Olympics and knitted neurons for the Cheltenham Science Festival.

So, you can see, contrary to popular belief, it's not all jam and Jerusalem, so why not come along one month and see what you think.

Next meetings:

Monday 6th February

Mrs Liz Suckling - Crickley Hill

Monday 5th March

Mrs Fiona Warin - Lost the Plot

7.30 p.m. in the Village Hall. Further information from Georgina Oldham 820423

CENTURY CLUB

Jenny and Jack Stringer again hosted the Christmas party for the Century Club on the 13th Dec'. Before tea Iris produced another of her quizzes, this time on the theme of sweets and chocolates. All thought it sounded easy, but proved to be anything but. The joint winners were Violet and Mildred with 19 correct answers out of 24. Well done.

We then had another of our excellent teas, with crackers donated by Jack and Jenny, and afterwards we were all again given a pot of hyacinth bulbs to take home. Thank you Jack and Jenny, and thanks too to the people who stepped in at short notice and provided cakes and sandwiches.

Our next meeting will be on the 14th Feb' and the speaker will be Mr. David O'Connor talking on the subject of "150 years of the Battledown estate". David is a local historian and has written several books on the history of the local area.

The Century Club meets on the Second Tuesday of the month in the village hall at 3.0 pm. For further information contact Iris Young 01242 583098

JUMBLE SALE

Saturday 3rd March 2.15pm

Bring any jumble to the hall on either Friday 2nd between 6.30pm and 7.30pm or Saturday 3rd between 10am and 11am or make alternative arrangements with Georgina 820423

PLEASE DO NOT DUMP IT OUTSIDE THE HALL

SONGS FROM THE MUSICALS

Friday 16th March

7.30pm Rhodes Memorial Hall

An entertaining evening watching clips from many different musicals.

Any requests please phone Georgina.

Snacks provided, but bring your own drinks.

Tickets £5 from Georgina 820423

Craven Arms

Quiz Nights 7.30pm

Thursday 2nd February

Thursday 1st March



Meetings

Friday 17th February

Rachel Salisbury - The Great Plant Hunters

Friday 23rd March

Jon Mason - Spring Gardening Tips

7.30pm in Rhodes Memorial Hall
Non-members are welcome to attend our meetings for a fee of £4

Information - Sally Coelho 821251

Good Neighbourhood Scheme



If you need help with transport etc ring a coordinator

☎ Sheila Agius 820102

☎ Di Brown 820271

☎ Thora Corris 820242

Published by Anne & Bill Jenkin, Grange Farm Studios, Brockhampton, Cheltenham, Glos. GL54 5XQ
Copied by European Engineering Services, 26 Suffolk Parade, Cheltenham, Glos. GL50 2AE